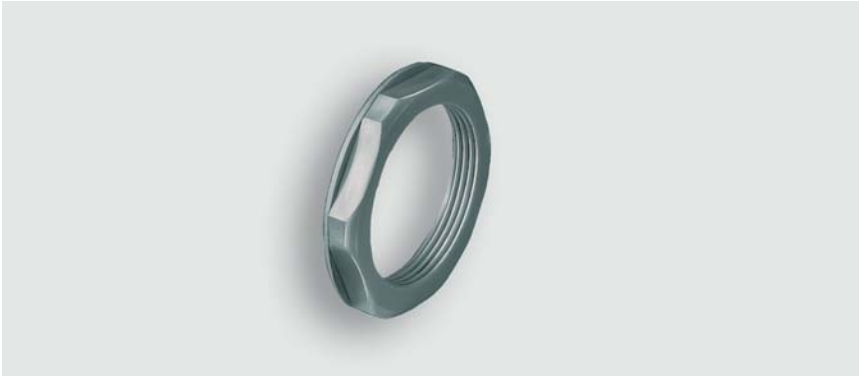


Technical data sheet - Plastic accessory locknut GK, PG version

Cable fittings and accessories



Identification	Type	GK PG29 GR
	Part-No.	600436
Use/Application/Characteristics		
Characteristics	<ul style="list-style-type: none">• – PG –• Counter nut, hexagonal, with armour thread	
Technical data		
Thread form	PG	
Thread G	PG 29	
SW	46 mm	
S	7 mm	
Construction		
Description	GK PG29 GR	
Material	PA 6 GF 30	
Color	grey RAL 7001	
General		
PU	50 piece	

13.08.2018 – Subject to technical modification

Part-No. 600436

USA: LUTZE INC.

13330 South Ridge Drive • Charlotte, NC 28273, USA
Tel. +1 (704) 504-0222 • Fax +1 (704) 504-0223
www.lutze.com • info@lutze.com

United Kingdom: LÜTZE Ltd.

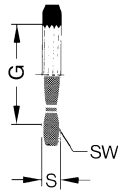
Unit 3, Sandy Hill Park
Sandy Way, Amington • GB-Tamworth, Staffs B77 4DU
Tel. +44 (0)1827 31333-0 • Fax +44 (0)1827 31333-2
www.lutze.com • sales.gb@lutze.co.uk



SYSTEMATIC TECHNOLOGY

Technical data sheet - Plastic accessory locknut GK, PG version

Dimensions



13.08.2018 – Subject to technical modification

Part-No. 600436

USA: LUTZE INC.

13330 South Ridge Drive • Charlotte, NC 28273, USA
Tel. +1 (704) 504-0222 • Fax +1 (704) 504-0223
www.lutze.com • info@lutze.com

United Kingdom: LÜTZE Ltd.

Unit 3, Sandy Hill Park
Sandy Way, Amington • GB-Tamworth, Staffs B77 4DU
Tel. +44 (0)1827 31333-0 • Fax +44 (0)1827 31333-2
www.lutze.com • sales.gb@lutze.co.uk